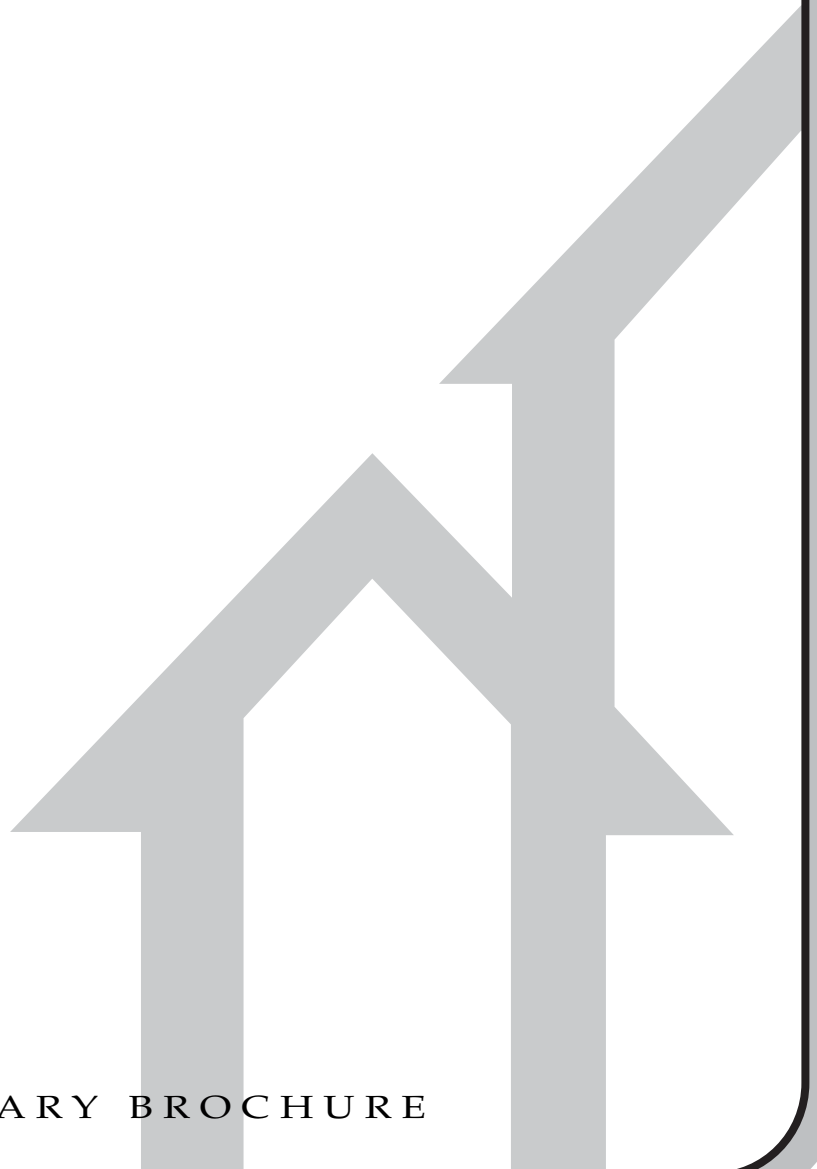


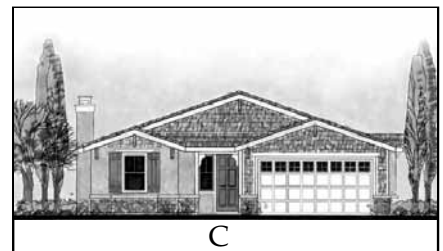
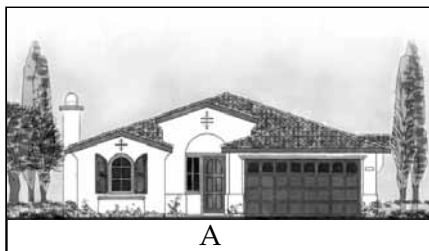
# *Brighton Place*



PRELIMINARY BROCHURE

# Bristol

Single Story ■ 1,873 Sq. ft. ■ 2 to 4 Bedrooms ■ 2 Baths  
 2 Car Garage ■ Optional Retreat / Optional Bed 4 at Study

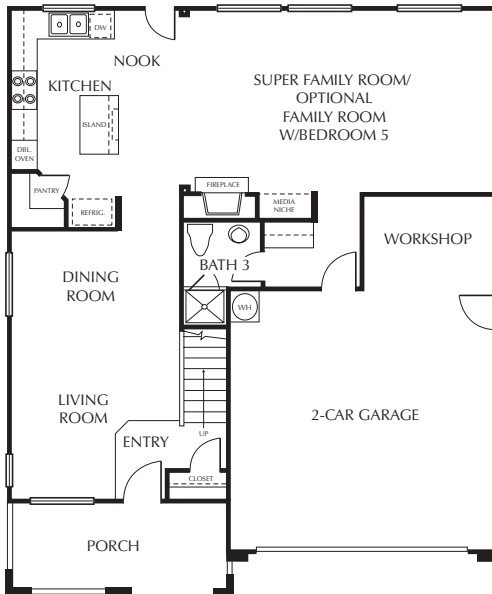
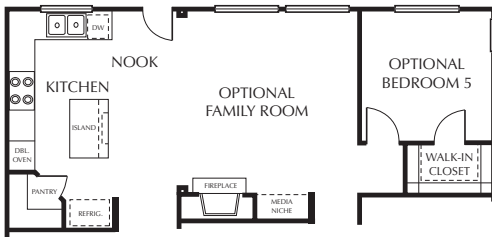


Floorplans and renderings are preliminary artist's concept and are not to scale.

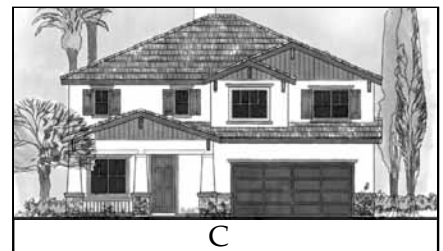
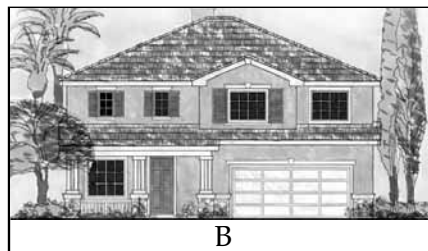
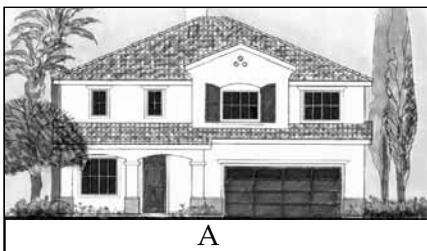
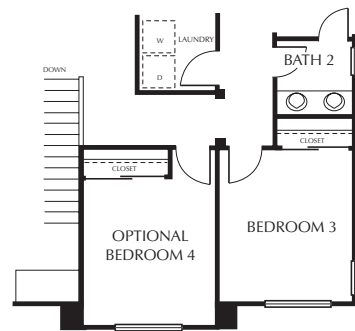
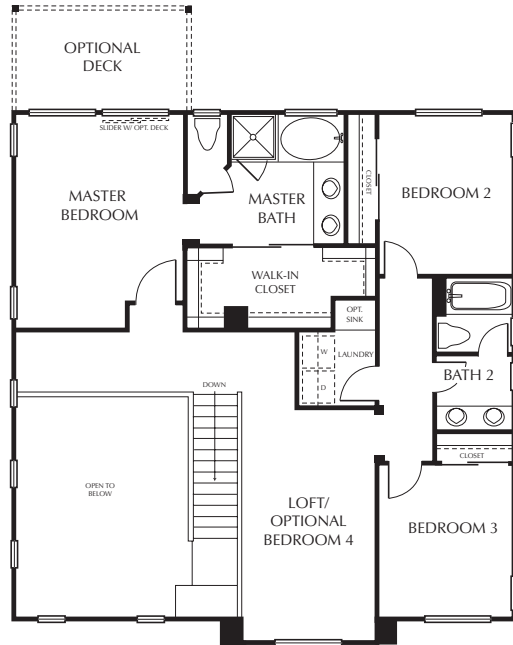
# Camden

Two Story ■ 2,255 Sq. ft. ■ 3 to 5 Bedrooms ■ 3 Baths  
 2 Car Garage ■ Optional Bed 5 at Family Room / Optional Bed 4 at Loft

## FIRST STORY



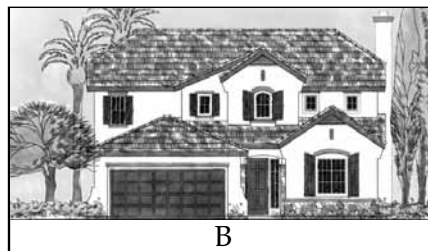
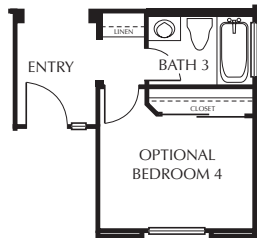
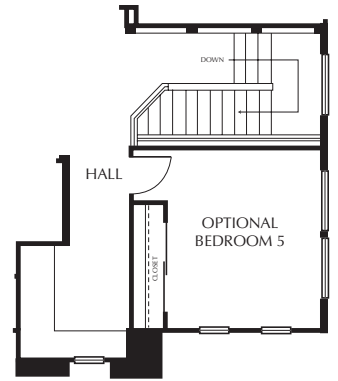
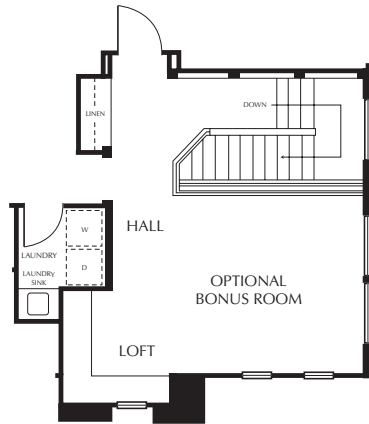
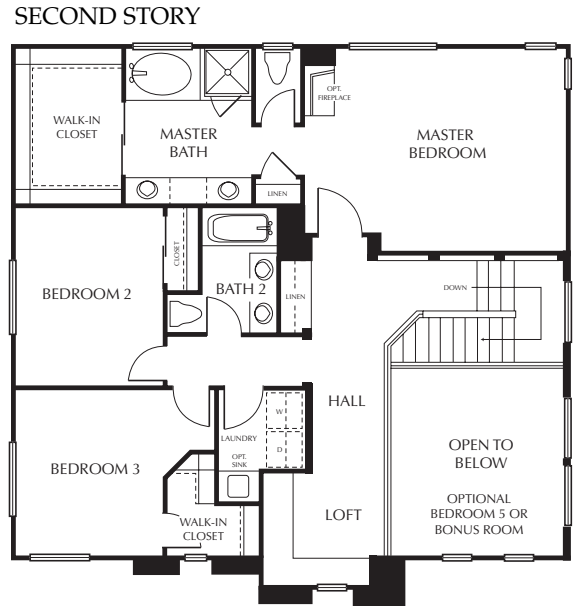
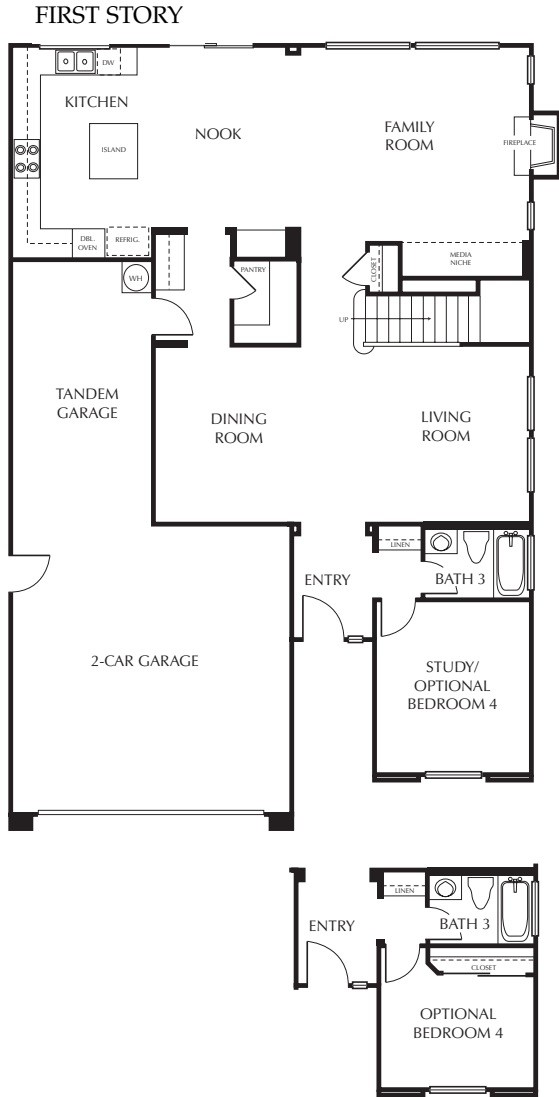
## SECOND STORY



Floorplans and renderings are preliminary artist's concept and are not to scale.

# Oxford

Two Story ■ 2,521 to 2,689 Sq. ft. ■ 3 to 5 Bedrooms ■ 3 Baths  
 2 Car Garage ■ Optional Bed 4 at Study / Optional Bed 5 or Bonus Room



Floorplans and renderings are preliminary artist's concept and are not to scale.

# *Delivering on a promise of excellence*



## **AMENITIES:**

### **EXTERIOR ARCHITECTURAL EXPRESSIONS**

Craftsman Revival, Mediterranean and Country Village architecture styles  
Mullioned windows with stylish detailing  
Stonework accents, per plan  
Front porch or covered entry, per plan  
Durable fire-resistant concrete roof tiles  
Crafted oversize front entry doors  
Front yard landscaping with automatic sprinkler system  
Sectional roll-up garage doors featuring a LiftMaster power opener with 2 remote transmitters  
Lighted address



### **INTERIOR DESIGN DETAILS**

Rounded corner walls  
Textured drywall finish on walls and ceilings throughout  
Raised-panel Colonist interior doors  
Designer interior hardware throughout  
Flooring to include carpet, Dal Tile 8 x 8 ceramic tile and Armstrong "Initiator" vinyl  
Elegant white painted stairway balusters with stain grade handrails  
Wood caps on low height walls along stairway  
Modern recessed lighting packages  
Cozy fireplaces and media niches  
Central air-conditioning  
Interior laundry rooms near bedrooms

### **EXQUISITE KITCHENS**

Designer polished chrome plumbing fixtures  
Dal Tile 6 x 6 ceramic tile kitchen countertops with full height ceramic tile backsplash  
Center island and pantry (in selected models)  
Refrigerator area plumbed for ice maker  
Energy-efficient General Electric appliances including:

- 36" sealed 5-burner glass cook top
- Oven stack with 30" self-cleaning oven and built-in microwave
- 5-cycle dishwasher

Garbage disposal  
Under cabinet fluorescent task lighting  
Walk-in pantry  
Designer chrome finish faucet with pull out sprayer



### **MASTER SUITES**

Spacious walk-in closets  
Dal Tile 4 x 4 ceramic tile vanity tops in master bathroom  
Relaxing soaking tub and separate shower  
Separate water closet  
Extra large vanity mirrors

# *Delivering on a promise of excellence*



## **VALUE ADDED FEATURES**

Gas stub for barbecue in rear yard  
Pre-wired for television in family room and master bedroom  
Drywalled interior garage walls  
Smoke detectors  
All fixtures equipped with light bulbs at move-in  
Equipped with Category-5 wiring for enhanced audio, video and data transmissions in select locations  
Holiday light package with (2) exterior waterproof outlets  
Laundry room cabinets



## **ENERGY EFFICIENT ADVANTAGES**

50-gallon gas water heater  
Fully insulated exterior walls and ceilings  
Dual-glazed windows with vinyl frames throughout  
Water conserving low-flush toilets  
Gas dryer hookup

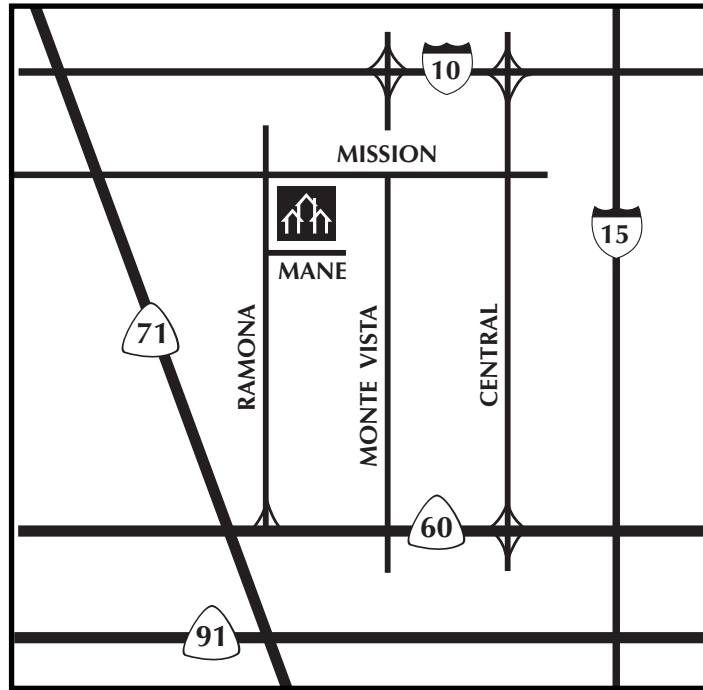
## **SPECIAL CUSTOM OPTIONS**

Security system packages  
Audio/Video/Data wiring packages  
Secondary bedroom mirrored wardrobe door selections  
Secondary bathroom tub enclosures  
Appliance upgrade selection packages  
Built-in media cabinets in family room  
Water systems



## **AVAILABLE FROM DESIGN CENTER**

Flooring selections including natural stone, hardwood, ceramic tile and carpet  
Window treatments including shutters



MAP NOT TO SCALE

## *Brighton Place*

Daily, Except Wednesday & Thursday  
10 am - 5 pm

4529 Mane St.  
Montclair, CA 91763  
Tel: 909-590-8500  
[www.willamfoxhomes.com](http://www.willamfoxhomes.com)

All information in this brochure is preliminary and subject to change. All of the floorplans and renderings depicted in this brochure are artists' concept only. All square footages are approximate. Please consult sales staff for details. In the interest of continuing product improvement, William Fox Homes reserves the right to change prices, terms, upgrades, concessions, and product or design without further notice or obligation.

